

NEW

The CAT logo is displayed in black on a yellow square background. It features the letters 'CAT' in a bold, sans-serif font, with a stylized mountain peak integrated into the letter 'A'.

COMING SOON

Cat® 797F Tier 4 Mining Truck



ITEM NUMBER
85655

Scale 1:50

8 3/4 x 2 5/8 x 3 1/8 in.
223 x 67 x 79mm

Big Iron! Introducing the Cat® 797F Tier 4 Mining Truck from Diecast Masters. No matter what you are hauling, this massive machine provides best-in-class performance in mines throughout the world.

Today's 797F is the most productive 363-tonne (400 ton) truck in the market. It's fast, fuel efficient and delivers class-leading productivity, making it the industry benchmark for lower cost per ton in its class size. It hauls more every load, every cycle and every shift and delivers a better bottom line to any mine.



Real Replicas

Contact your Diecast Masters distributor today to order.

Key Features of Our New 794F Tier 4 Mining Truck

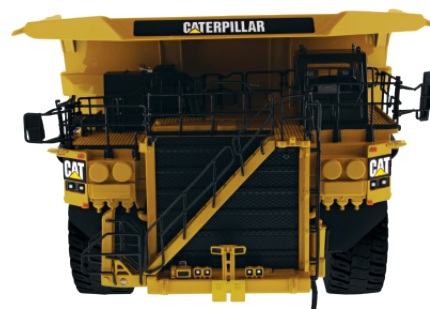
- Detailed cab interior including removeable operator
- Authentic Cat Machine yellow paint with trade dress
- Truck bed raises and lowers on three-stage cylinders
- Opening engine compartment and engine details
- “Powered” access ladder raises and lowers
- Tread and pattern detail on all visible metal surfaces
- Authentic grab bar, rails and ladders
- Rock knockers on rear tires
- Body cables on rear of truck
- Authentic tire tread pattern



High Line Series Packaging

Collectible, full-color-printed metal box, including machine photos and specifications. Die-cut foam insert protects model within the box. cardboard outer box provides additional protection.

360° views of 1:50 Scale
Cat® 797 Tier 4 Mining Truck



Contact your Diecast Masters distributor today to order.



14+ Diecast Masters scale models are adult collectibles, not toys. Not intended for children under 14.

www.cat.com / www.caterpillar.com

©2020 Caterpillar. CAT, CATERPILLAR, their respective logos, “Caterpillar Yellow,” the “Power Edge” trade dress as well as corporate and product identity used herein, are trademarks of Caterpillar and may not be used without permission.

Diecast Masters Company Limited, a licensee of Caterpillar Inc.