

# D7E

Track-Type Tractor

**CATERPILLAR**<sup>®</sup>



## Engine

Engine Model	Cat <sup>®</sup> C9.3 ACERT <sup>™</sup>	
Net Power – SAE J1349	175 kW	235 hp

## Drive Train

Type	Electric Drive
------	----------------

## Weights

Operating Weight – STD SU	25 700 kg	56,669 lb
Operating Weight – LGP S	28 170 kg	62,115 lb
Shipping Weight – STD	21 600 kg	47,619 lb
Shipping Weight – LGP	23 980 kg	52,866 lb

## D7E Features

### Electric Drive Power Train

*The revolutionary electric drive system delivers excellent dozing efficiency and performance while consuming considerably less fuel and fewer parts to reduce lifetime owning and operating costs.*

### Operator Station

*Center post cab design offers more space, improved all-around visibility and reduced noise levels.*

### ACERT™ Engine Technology

*Cat C9.3 engine with ACERT™ Technology powers an electric generator that efficiently converts mechanical energy into AC electrical current. Meets U.S. EPA Tier III, EU Stage IIIa and Japan MLIT Step 3 emissions regulations.*

### Grade Control Ready

*Factory installed wiring and mounting points make it simple to add a Cat AccuGrade™ system for improved accuracy and increased productivity.*

### Serviceability

*New tilt cab provides easy access to drive system components, hydraulic pumps and lines. Grouped service points and large access doors facilitate easy daily maintenance.*

### Sustainability

*Designed to do more work while consuming fewer resources – good for business and good for the planet.*

## Contents

Power Train.....	3
Engine .....	4
Cooling System.....	4
Operator Station.....	5
Undercarriage .....	6
Technology Solutions .....	7
Work Tools.....	8
Serviceability.....	9
Customer Support.....	10
Sustainability .....	10
D7E Track-Type Tractor Specifications .....	11
D7E Standard Equipment.....	15
D7E Optional Equipment.....	15



**The Cat® D7E was designed to meet growing demand for powerful yet highly maneuverable track-type tractors. By adapting electric drive technology to the unique requirements of dozer applications, Caterpillar has developed an all-new class of tractor that delivers the best possible balance of heavy-dozing and fine-grading performance.**

**The innovative diesel-electric hybrid technology of the D7E is also designed to burn considerably less fuel and consume fewer fluids and parts for reduced owning and operating costs. Improved productivity and efficiency means getting more work done while using fewer resources.**

# Power Train

First-of-its-kind Electric Drive delivers power and efficiency.

The electric generator, power inverter and propulsion module in the electric drive system replace traditional mechanical components such as a torque converter and transmission.

The Cat® C9.3 engine with ACERT™ Technology turns a powerful electric generator that efficiently converts mechanical energy into AC electrical current. Electrical current from the generator flows through specially armored cables and military grade connectors to a solid-state power inverter. Advanced electronics send AC current to the propulsion module to control the motors and provides DC current for the accessory systems.

The propulsion module delivers well-modulated torque via axles to the final drives. Consisting of state-of-the-art AC electric motors—and connected to the D7E updated differential steering system—the propulsion module has no moving electrical contacts and few moving mechanical parts.

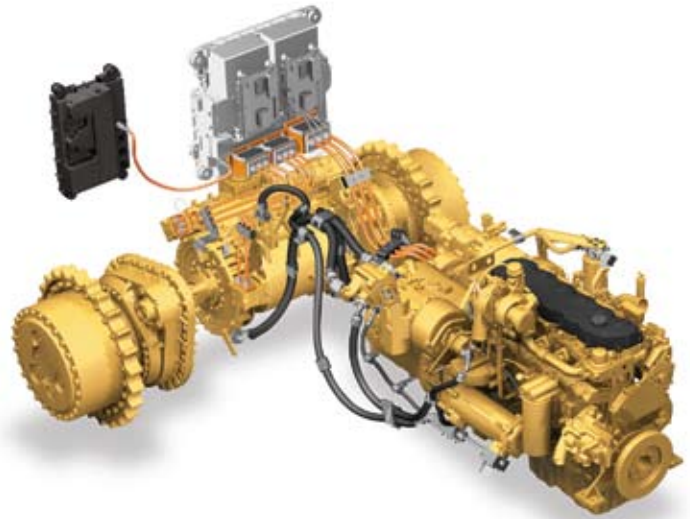
All electrical components are fully sealed to safely operate in a wide range of dozing conditions. Liquid cooling ensures that the electric drive components deliver peak performance in extreme temperature conditions.

The D7E electric drive system is highly efficient at delivering engine power to the ground. Infinitely variable speed control, means there are no gears to shift. Operators can concentrate on the task and the job site, rather than on shifting gears and managing engine speed. Training is simplified as well.

A proven differential steering system combines with electric drive to make the D7E the only system that can perform locked-track pivot turns for better maneuverability. A dedicated D8-size steering pump delivers improved performance.

## Benefits

- Fuel efficiency: 10 – 30 percent less fuel burned per hour.
- Reduced owning and operating costs: Fewer moving parts, longer drive train component life, reduced lifetime service and maintenance.
- Resourceful: Designed to use less fuel and fluids, and fewer replacement parts.
- Increased efficiency: Lower fuel usage per cubic yard of material moved.
- Increased productivity: More material moved per hour.
- Versatility: Power, smooth operation and maneuverability for a wide variety of applications.



# Engine

## ACERT™ Technology.



The D7E electric drive train is powered by a 235 hp Cat C9.3 engine with ACERT™ Technology. The engine utilizes a proven common rail fuel system for improved efficiency and fuel economy. Featuring the latest in Cat emissions reduction technologies, this engine meets U.S. EPA Tier III, EU Stage IIIa and Japan MLIT Step 3 emissions regulations.

The efficient drive train allows the engine to operate in a tighter rpm range, 1500 – 1800 rpm, which helps extend engine life and improve fuel economy. The increased drivetrain efficiency also allows the machine to achieve greater performance at lower horsepower than previous models, adding even more to the D7E overall benefits.

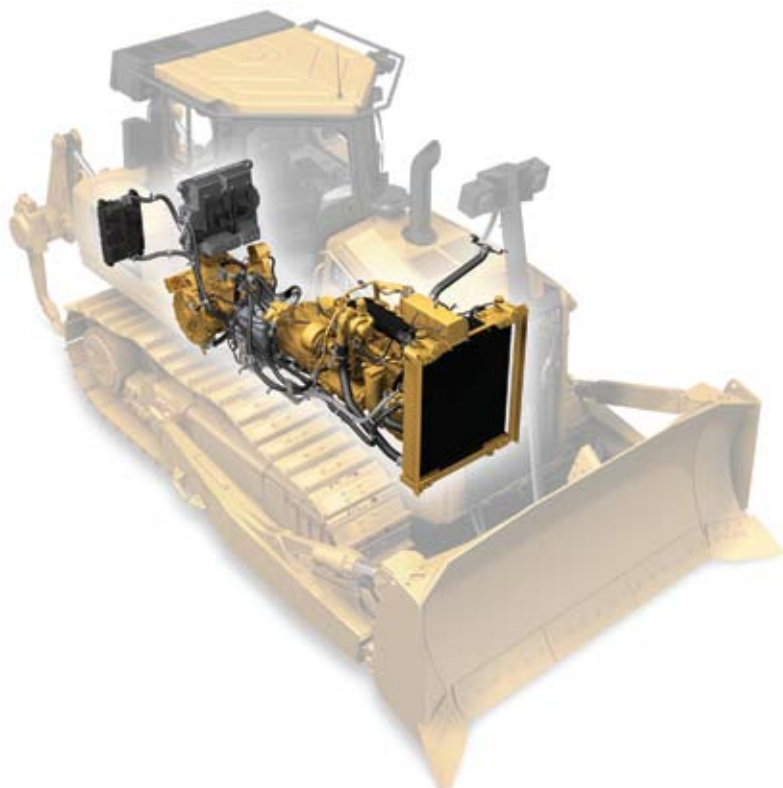
### Features

- **Beltless design:** Accessory systems are electrically powered, so engine belts and alternators are not needed.
- **Serviceability:** Electric priming pump and easier engine access make service easier.
- **Leak Protection:** Components are sealed, preventing leaks and protecting fluids from contamination.

## Cooling System

### Efficient and easy to service.

The D7E cooling system uses a three-part radiator built with rugged, highly efficient aluminum bar cores for charged air, jacket water, and the separate circuit. Although the jacket water and separate circuit coolant operate at different temperatures, the radiator appears and acts as one integrated unit. Airflow is managed by a hydraulic variable speed demand fan, reducing power requirements and fuel consumption. A molded shroud ensures efficient air flow through the radiator and the fan utilizes lightweight, durable fiberglass blades for high efficiency and quiet operation. A larger gap between fins reduces plugging, and the single-plane design allows for easier cleaning and service.





# Operator Station

Unprecedented all-around visibility and comfort.

The all new D7E cab is designed to maximize operator efficiency. From the operator's seat, the single center post aligns perfectly with the air intake, exhaust and lift cylinder, greatly enhancing forward visibility. The angled door provides more side glass area, improving sightlines to the blade and all around the job site. That helps operators work more confidently and productively all shift long and enhances job site safety.

- The cab offers more interior space, as well as wider, swing out doors for easier cab access.
- Ergonomic controls are fully adjustable and designed for low-effort comfort. Switches and controls for various systems are located within easy reach of the operator.
- Interior noise levels are reduced to a quiet 73 dB(A).
- A single-unit heating, ventilation and air conditioning (HVAC) system is self contained and powered by electrical current from the accessory power converter. It has no belts, needs no long refrigerant lines, and maintains maximum cooling efficiency even when the machine goes to idle.
- An integrated display screen provides a range of machine status information, plus safety, service and maintenance-related alerts. Built-in connections and mounts make for easy installation of a grade control system display.
- A speed recall feature allows operators to pre-set the desired forward and reverse travel speed, and then resume that speed simply by pressing a button.

# Undercarriage

Durable versatility.



The D7E features an advanced low drive undercarriage design for greater machine versatility in a wider range of applications. Improved visibility, especially to the sides, is only one of the several benefits of this highly efficient undercarriage system.

D10-size sprocket bearings give the D7E the added durability for a wide range of applications. Shock loads are directed through the roller frame to reduce wear and tear on the machine – and on the operator. The low drive undercarriage configuration also allows the cab to be tilted for convenient service access to the drive train system.

## Heavy Duty Undercarriage

The heavy duty undercarriage system is well suited to aggressive, high impact applications such as logging, side-slopes, or working in rocky or uneven terrain. The components are designed for extended wear life in abrasive conditions and high impact applications.

The heavy duty track features improved track shoe design – increased grouser height, enhanced penetration, increased leading and trailing edge of shoe and increased track overlap.

## Optional SystemOne™ Undercarriage

The optional SystemOne™ undercarriage has been proven to reduce total undercarriage owning and operating costs by 35 – 70 percent. SystemOne features lifetime sealed and lubricated cartridges to eliminate bushing turns, and sprockets require no replacement during the life of the chain. A rotating bushing design allows the center tread idlers and sprocket segments to last through at least two sets of track. An open and smooth roller frame design reduces mud buildup and enables easy clean-out. In addition, all SystemOne undercarriage components are designed to work and wear as a system. They deliver long, balanced wear life and require very little service between undercarriage overhauls.

## Undercarriage Configurations

STD – designed for versatility, this undercarriage configuration works in a variety of soil conditions. It provides the proper ground contact and pressure to maximize your productivity.

LGP – designed to work in soft and spongy conditions. Wide track shoes, long track frames, and a wider gauge increases track contact area and reduces ground pressure for improved stability providing excellent flotation in swampy conditions.





# Technology Solutions

Systems to achieve even greater productivity.

## AccuGrade™ System for Track-Type Tractors

Caterpillar is helping customers revolutionize the way they move material with new technology solutions for earthmoving machines – solutions that provide greater accuracy, higher productivity, lower operating costs and more profitability. The AccuGrade System is designed and integrated into the machine and hydraulic systems to create an automated blade control. Blade-mounted sensors calculate precise blade slope and elevation information. The integrated electro-hydraulic valve control module uses the information from the sensors to automatically adjust the blade to maintain grade. Automated blade control allows operators to improve efficiency and productivity by achieving grade faster and in fewer passes than ever before, reducing the need for traditional survey stakes or grade checkers.

## Grade Control Ready

The D7E ships from the factory with grade control system wiring and mounting points already installed. This makes adding AccuGrade quick and easy, and optimizes performance and reliability. Productivity is further enhanced by the D7E distributed electro-hydraulic system. Hydraulic valves are placed next to the components they control for quicker response and faster cycle times.

## Cat Product Link

Cat® Product Link enables convenient remote monitoring of equipment. Get useable information to keep jobs on schedule, maintain machine health and reduce fleet owning and operating costs.

- Simplify fleet management and monitor machine use.
- Link all machines, regardless of brand.
- Three levels of insight to meet specific business requirements.

# Work Tools

Designed for performance and versatility.



## Dozer Blades

The D7E features a robust, single lift cylinder design. The single cylinder delivers the same power as a dual-cylinder system, but with fewer than half the components. Blade stability is excellent, supported by L-shaped push arms.

Dozer blade capacity is the same as previous models, although the D7E blade enhances durability with thicker plating.

## Blade Options

- Universal Blade
- Semi-Universal Blade
- Straight Blade
- Angle Blade

## Rear Attachments

Distributed hydraulics and commonality among D7E rear Work Tools help maximize productivity and efficiency. A well-balanced machine design means counterweights are not needed when a rear work tool is not attached.

### • Ripper

The ripper on the D7E is placed closer to the machine for improved balance. The Ripper Auto Stow function allows the operator to automatically raise and position the ripper for the next pass. Cast-in ripper mounts mean the machine comes ready-to-pin from the factory, so a ripper can be mounted quickly and easily. Choose a single- or multi-shank ripper. The lift and tilt cylinders of the D7E dual-function, multi-shank ripper feature a similar bore and rod sizing, piston, cap assembly, cylinder frame and ripper carriage as previous offerings.

### • Winch

The hydraulically driven winch for the D7E features positive load control with variable speed, a dual braking system, a single lever control and a standard three roller fairlead.

### • Drawbar

The drawbar for the D7E is suited for a variety of applications, including disks, compactors, chopper wheels, pull-type scrapers and retrieving other equipment.





# Serviceability

Increase uptime by reducing service time.

The D7E redefines serviceability. With easy access to service points and increased servicing intervals, the D7E can significantly reduce total owning and operating costs.

- Service points are grouped on the left side of the machine for quick and easy routine maintenance.
- A tilt cab allows easy access to modular major components, such as generator, propulsion module, power electronics and hydraulics.
- A battery disconnect switch initiates safe shutdown of the electric drive system for maintenance.
- Longer service intervals on fluids and filters.
- Modular final drives can be easily accessed and serviced.
- The heating, ventilation and air conditioning (HVAC) system is self contained for improved performance, increased service intervals and ease of serviceability.
- Electric drive reduces maintenance requirements by eliminating belts, engine-mounted compressors, alternator, clutches and transmission control valves.
- Ground-level sight gauges provide quick and easy inspection of fluid levels.
- Maintenance-free, heavy duty batteries with disconnect switch.
- Remote electric priming pump and under-hood servicing light.
- Optional high-speed oil change system.
- Optional remote jumpstart receptacle.
- Cat monitoring system.

# Customer Support

Count on Cat dealers for business solutions.



## Selection

Cat dealers can help customers compare and choose the right machine for their business.

## Financing

Cat dealers offer financing options to meet a variety of needs.

## Operation

Improve operating technique for better productivity and profit with the latest Cat dealer training resources.

## Product Support

Cat dealers are with customers every step of the way with unsurpassed worldwide parts support, trained technicians and customer support agreements.

# Sustainability

Resourceful in every way.

The D7E is designed to maximize efficiency and productivity while conserving natural resources.

- Burns 10 – 30 percent less fuel per hour than previous models. Less fuel burned means reduced emissions.
- The D7E earned a 2009 Clean Air Excellence Award from the U.S. Environmental Protection Agency.
- More efficient – 25 percent more material moved per liter/gallon of fuel.
- Fewer parts and longer component life, less fuel and fluids, means less to replace and less to dispose of.
- Major structures and components are built to be rebuilt, reducing waste and replacement costs.



# D7E Track-Type Tractor Specifications

## Engine

Engine Model	Cat® C9.3 ACERT™	
Gross Power	188 kW	252 hp
Net Power – Caterpillar	175 kW	235 hp
Net Power – ISO 9249	175 kW	235 hp
Net Power – SAE J1349	175 kW	235 hp
Net Power – EU 80/1269	175 kW	235 hp
Bore	115 mm	4.5 in
Stroke	149 mm	5.9 in
Displacement	9.3 L	567 in <sup>3</sup>

- Ratings at 1700 rpm.
- Net power advertised is the power available at the flywheel when engine is equipped with fan, air cleaner, and muffler.
- No derating required up to 2286 m (7,500 ft) altitude, beyond 2286 m (7,500 ft) automatic derating occurs.

## Service Refill Capacities

Fuel Tank	409 L	108 gal
Fuel Tank, High Capacity	476 L	126 gal
Cooling System	87 L	22.5 gal
Engine Crankcase	30 L	8 gal
Power Train	60 L	16 gal
Final Drives (each)	34 L	9 gal
Final Drive (LGP each)	42 L	11 gal
Pivot Shaft Compartment	7 L	1.8 gal
Hydraulic Tank	76 L	20 gal

## Weights

Shipping Weight	21 600 kg	47,619 lb
Operating Weight – STD SU	25 700 kg	56,669 lb
Operating Weight – LGP S	28 170 kg	62,115 lb
Shipping Weight – LGP	23 980 kg	52,866 lb

- Shipping Weight includes lubricants, coolant, ROPS/FOPS cab, standard track and 10% fuel.
- Operating Weight includes blade, lubricants, coolant, full fuel tank, standard track, ROPS/FOPS cab, drawbar and operator.

## Hydraulic Controls – Pump

Pump Output – Steering	312 L/min	82.4 gal/min
Pump Output – Implement	200 L/min	52.8 gal/min
Lift Cylinder Flow	190 L/min	42 gal/min
Ripper Cylinder Flow	190 L/min	42 gal/min
Pump Type	Piston, Variable Displacement	
Tilt Cylinder Flow – Head End Flow	93 L/min	24.6 gal/min
Tilt Cylinder Flow – Rod End Flow	66 L/min	17.4 gal/min

## Hydraulic Controls – Main Relief Valve

Pressure Setting – Steering	27 600 kPa	4,000 psi
--------------------------------	------------	-----------

- Rated Implement Pump Speed 2006 rpm.
- Rated Steering Pump Speed 2516 rpm.

## Hydraulic Controls – Maximum Operating Pressure

Bulldozer	27 600 kPa	4,000 psi
Tilt Cylinder	27 600 kPa	4,000 psi
Ripper (Lift)	27 600 kPa	4,000 psi
Ripper (Pitch)	27 600 kPa	4,000 psi
Steering	41 000 kPa	5,950 psi

## Ripper

Type	Multi-Shank	
Number of Pockets	3	
Overall Beam Width	2088 mm	82.2 in
Beam Cross Section	355 mm	14.0 in
Maximum Clearance Raised (under tip, pinned in bottom hole)	588 mm	23.1 in
Maximum Penetration	650 mm	25.6 in
Maximum Penetration Force	8908 kg	19,639 lb
Pryout Force	23 902 kg	52,695 lb
Weight – with One Shank	1650 kg	3,572 lb
Each Additional Shank	150 kg	330 lb
Ramp Angle	26 Degrees	
Pocket Spacing	900 mm	35.4 in
Shank Gauge	1800 mm	70.9 in
Shank Section	72 mm × 228 mm 2.8 in × 9.0 in	

# D7E Track-Type Tractor Specifications

## Winch

Winch Model	PA90	
Weight*	1520 kg	3,350 lb
Oil Capacity	12 L	3.2 gal
Winch and Bracket Length	1115 mm	93.9 in
Winch Case Length	1110 mm	43.7 in
Winch Case Width	826 mm	32.5 in
Increased Tractor Length – STD	1032 mm	93.9 in
Increased Tractor Length – LGP	1032 mm	93.9 in
Drum Diameter	318 mm	12.5 in
Drum Width	226 mm	8.9 in
Flange Diameter	610 mm	24 in
Drum Capacity – 24 mm (1 in)	62 m	203 ft
Drum Capacity – 29 mm (1.13 in)	56 m	185 ft
Ferrule Size (O.D. × Length)	60 mm × 65 mm	2.38 in × 2.56 in
Winch Drive	Hydraulic	
Control	Electronic/Hydraulic	
Installed Weight	1520 kg	3,350 lb
Winch Length	1115 mm	43.9 in
Overall Width	1090 mm	43 in
Throat Clearance	218 mm	8.6 in
Rope Diameter (recommended)	25 mm	1 in
Cable Ferrule Size (O.D. × Length)	60 mm × 65 mm	2.38 in × 2.56 in
Maximum Bare Drum Line Pull	40 800 kg	90,000 lb
Maximum Bare Drum Line Speed	21 m/min	70 ft/min
Maximum Full Drum Line Pull	25 800 kg	57,000 lb
Maximum Full Drum Line Speed	35 m/min	116 ft/min

\* Basic winch weight, mounting arrangement, hydraulic and electrical system weight.

## Standards

ROPS/FOPS	SAE 1040, ISO 3471-1994/ISO 3449-2005, SAE 5231
Brakes	ISO 10265 2008
Cab	ANSI/SAE J1166 OCT 98

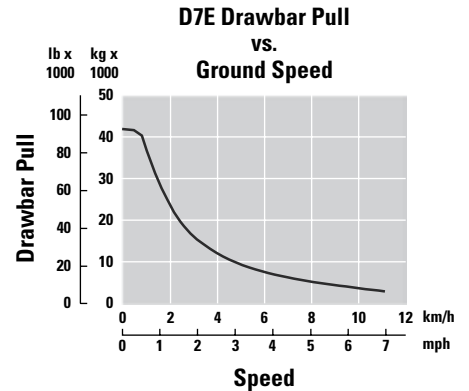
- The operator sound exposure Leq (equivalent sound pressure level) measured according to the work cycle procedures specified in ANSI/SAE J1166 OCT 98 is 77 dB(A), and as measured by ISO 6396: 2008 is 73 dB(A), for cab offered by Caterpillar, when properly installed and maintained and tested with the doors and windows closed.
- Hearing protection may be needed when operating with an open cab (when not properly maintained or doors/windows open) for extended periods and noisy environment.
- The exterior sound pressure level for the standard machine measured at a distance of 15 meters according to the test procedures specified in SAE J88 APR 95, mid-gear-moving operation, is 80 dB(A).

## Drive Train

Type	Electric Drive
AC Compressor Nominal Input Voltage	320 volts
AC Compressor Maximum Input Current	12 amps
Electric Water Pump System Nominal Input Voltage	320 volts
Electric Water Pump System Nominal Input Current	5 amps
AC Generator and Propulsion Module Voltage	480 volts

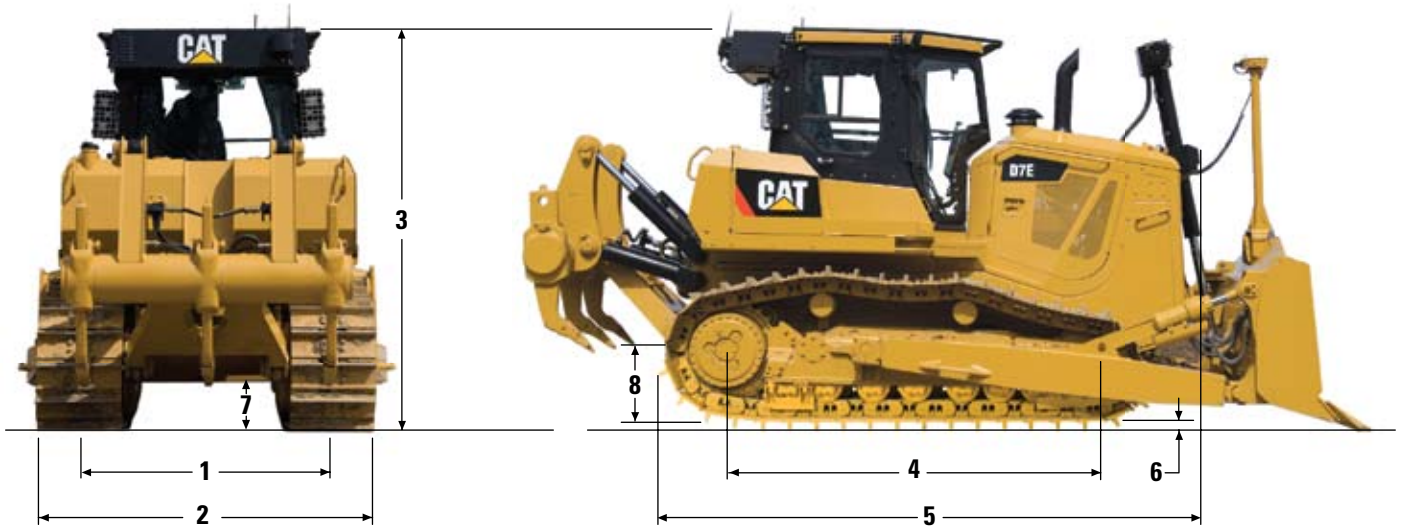
- Nominal current dependent on heat/humidity loading on HVAC unit.
- Measured with water pump operating speed of 4400 rpm. Measurement is 1 amp with the water pump operating speed of 2100 rpm.

## Drawbar Pull



## Dimensions

All dimensions are approximate



	STD		LGP	
<b>1</b> Track Gauge	1981 mm	78 in	2286 mm	90 in
<b>2</b> Width of Tractor over Trunnions	2880 mm	113 in	3423 mm	135 in
Width of Tractor without Trunnions (std. shoes)	2591 mm	102 in	3200 mm	126 in
<b>3</b> Machine Height from Tip of Grouser				
Top of Stack	3365 mm	132 in	3365 mm	132 in
Top of Standard Cab	3392 mm	134 in	3392 mm	134 in
From Ground Face of Shoe	3322 mm	131 in	3322 mm	131 in
<b>4</b> Length of Track on Ground	3016 mm	119 in	3450 mm	136 in
<b>5</b> Length of Basic Tractor	4608 mm	181 in	4608 mm	181 in
With the following attachments add to basic tractor length:				
Ripper (with tip at ground line)	1391 mm	55 in		N/A
Ripper (with tip fully raised)	1222 mm	48 in		N/A
Winch	1032 mm	41 in	1032 mm	41 in
Drawbar	270 mm	10.6 in	270 mm	10.6 in
S Blade	977 mm	38 in	977 mm	38 in
SU Blade	1187 mm	47 in	1187 mm	47 in
U Blade	1425 mm	56 in	1425 mm	56 in
A Blade	1230 mm	48 in	1230 mm	48 in
<b>6</b> Height of Grouser	70 mm	2.75 in	70 mm	2.75 in
<b>7</b> Ground Clearance	472 mm	18.6 in	472 mm	18.6 in
Ground Contact Area (std. shoes)	3.68 m <sup>2</sup>	5,698 in <sup>2</sup>	6.31 m <sup>2</sup>	9,792 in <sup>2</sup>
Number of Shoes per Side	40		44	
Standard Shoe Width and Type	610 mm	24 in	915 mm	36 in
	MS		MS	
Ground Pressure	0.699 kg/cm <sup>2</sup>	9.9 psi	0.446 kg/cm <sup>2</sup>	6.3 psi
Pitch	215.9 mm	8.5 in	215.9 mm	8.5 in
Track Rollers/Side	7		8	
Number of Carrier Rollers	2		2	
<b>8</b> Drawbar Height (grouser tip to center of clevis)	719 mm	28 in	719 mm	28 in

# D7E Track-Type Tractor Specifications

## Bulldozer Specifications

Blade		7S	7SU	7U	7A		7S LGP
					Straight	Angled 25°	
Blade Capacity (SAE J1265)	m <sup>3</sup>	5.16	6.86	8.34	5.15	–	5.89
	yd <sup>3</sup>	6.75	8.98	10.91	6.74	–	7.7
Width (over end bits)	mm	3904	3693	3988	4503	4120	4545
	ft	12.81	12.12	13.08	14.77	13.52	14.91
Height	mm	1363	1524	1553	1373	1373	1343
	ft	4.5	5	5.1	4.5	4.5	4.4
Digging Depth	mm	586	586	586	711	711	644
	in	23.1	23.1	23.1	28	28	25.4
Ground Clearance	mm	1108	1108	1108	1120	1120	1264
	in	43.6	43.6	43.6	44.1	44.1	49.8
Maximum Tilt	mm	1045	987	1085	695	695	785
	in	41.1	38.9	42.7	27.4	27.4	30.9
Weight*	kg	3504	3832	3806	3790	3790	3970
	lb	7,709	8,431	8,373	8,330	8,330	8,734

\* Weight includes cylinder mounting, lift cylinder and lines, blade, push arms, trunnions, and cylinder lines (Tilt).

## Undercarriage

Type	Heavy Duty/SystemOne Undercarriage			
	STD		LGP	
Configuration	7		8	
Number of Rollers (each side)	7		8	
Number of Shoes (each side)	40		44	
Pitch	216 mm	8.5 in	216 mm	8.5 in
Shoe Width	610 mm	24 in	915 mm	36 in
Grouser Height (MS)	70 mm	2.75 in	70 mm	2.75 in
Length of Track on Ground (Heavy Duty)	3016 mm	119 in	3450 mm	136 in
Length of Track on Ground (SystemOne)	3021 mm	119 in	3455 mm	136 in
Track Gauge	1981 mm	78 in	2286 mm	90 in
Ground Contact Area (Heavy Duty)	3.68 m <sup>2</sup>	5,698 in <sup>2</sup>	6.31 m <sup>2</sup>	9,792 in <sup>2</sup>
Ground Pressure (Heavy Duty)	69.9 kPa	9.9 psi	44.6 kPa	6.3 psi
Ground Clearance	472 mm	18.6 in	472 mm	18.6 in

## D7E Standard Equipment

Standard equipment may vary. Consult your Caterpillar dealer for details

### ELECTRICAL

Accessory Power Converter (APC)  
Alarm, Backup  
Batteries, Heavy Duty  
Converter, 24V to 12V, 10 Amp  
Heater, Engine Coolant, 120V  
Horn, Forward Warning

### OPERATOR ENVIRONMENT

Air Suspension Seat  
Armrest, Adjustable  
Bidirectional Shift Switch  
Center Post Cab, ROPS/FOPS  
Continuously Variable Speed Control  
Differential Steering  
Electro-Hydraulic Controls  
Electronic Monitoring System  
Foot Supports, Dash  
Hour Meter, Electronic  
Machine Isolation, Operator Presence  
Mirror, Rearview  
Modular HVAC, Cab Mounted  
Radio Ready, 12V  
Seat Belt, Retractable 3" (76 mm)

Speed Recall Button  
Throttle Dial, Electronic  
Tilt Cab and Tilt Cab Jack  
Travel Control Pedal  
Wipers, Intermittent

### POWER TRAIN

Aftercooler  
Air Cleaner, precleaner with strata tube dust ejector  
C9.3 ACERT Engine  
Continuously Variable Speed Transmission  
Coolant, Extended Life  
Drains, Ecology, Power Train  
Electronic Air Cleaner Service Indicator  
Fan, Hydraulically Driven Demand  
Final Drives, Double Reduction  
Fuel Priming Pump, Electronic  
Muffler  
Parking Break, Electronic  
Prescreener  
Starting Aid, Ether  
Turbocharger, Wastegated  
Water Separator

### UNDERCARRIAGE

Heavy Duty Track (610 mm/24" MS)  
Heavy Duty Track (914 mm/36" MS) (LGP)  
Guards, End Track Guiding  
Idler Guards  
Master Link  
Rollers and Idlers, Lifetime Lubricated  
Sprocket Rim Segments, Replaceable  
Track Adjusters, Gas Spring Recoil,  
Grease Track Adjust

### OTHER STANDARD EQUIPMENT

CD ROM Parts Book  
Engine Enclosures, Perforated  
Front Tow Hook  
Grade Control Ready  
Guards, Hinged Bottom  
Hood, Perforated  
Hydraulics, Load Sensing, Dozer Lift and Tilt  
Oil Cooler, Hydraulic  
S•O•S<sup>SM</sup> Sampling Ports  
Radiator Doors, Louvered, Double Hinged  
Vandalism Protection for Fluid Compartments and Battery Box

## D7E Optional Equipment

Optional equipment may vary. Consult your Caterpillar dealer for details

610 mm, 660 mm, 914 mm (24", 26", 36")  
Track Pads  
AccuGrade Ready Installation Arrangement  
Black Hood and Back of Blade  
Cold Weather Attachments  
Engine Coolant Heater, 240 V  
Enhanced Clean Cab  
Fast Fuel  
Final Drive Clamshell Guards  
Final Drive Flange Protection  
Forestry Arrangement  
Front and Rear Screens

Heated Seat  
Heavy Duty Grill Door, Hinged  
Hydraulic Implement Towing Arrangement  
Jump Starting Receptacle  
Lights  
Basic (6) Lights  
Premium (10) HID Lights  
Premium (10) Lights  
Multi-shank Ripper and Ripper Hydraulics  
Power Train Oil Change System  
Product Link

Rear Vision Camera  
Reversible Fan  
SU (Semi-universal), U (Universal),  
(S) Straight, and Angle Blades  
Sweeps (without canopy)  
SystemOne Undercarriage  
Track Guide Guards  
Turbine Precleaner  
Waste (Landfill) Arrangements  
Winch Arrangement (PACCAR PA90)  
Winch Hydraulics  
Woodchip Arrangement

# D7E Track-Type Tractor

For more complete information on Cat products, dealer services, and industry solutions, visit us on the web at [www.cat.com](http://www.cat.com)

© 2009 Caterpillar Inc.  
All rights reserved

AEHQ6021 (06-2009)

Materials and specifications are subject to change without notice. Featured machines in photos may include additional equipment. See your Caterpillar dealer for available options.

CAT, CATERPILLAR, SAFETY.CAT.COM, their respective logos, "Caterpillar Yellow" and the POWER EDGE trade dress, as well as corporate and product identity used herein, are trademarks of Caterpillar and may not be used without permission.

**CATERPILLAR®**